

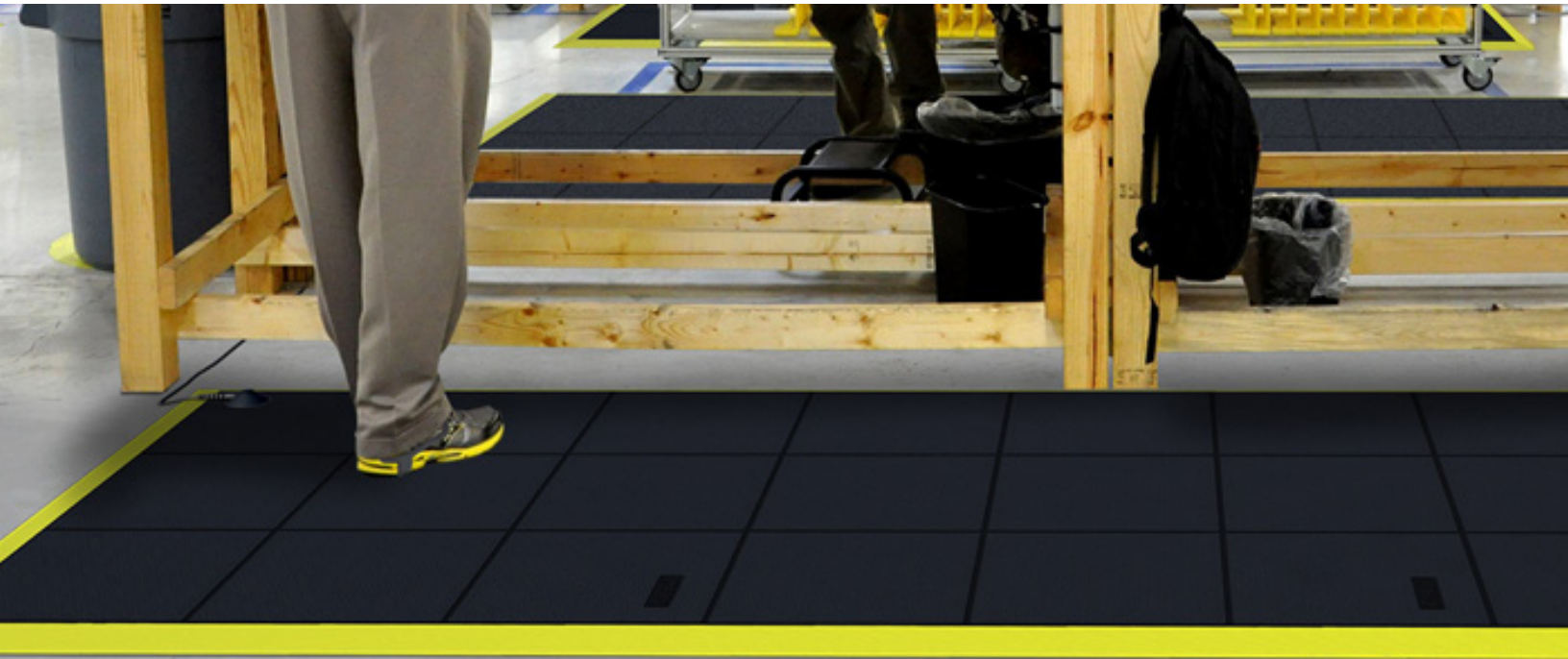


Justrite Safety Group

558 - CUSHION-EASE[®] ESD SOLID

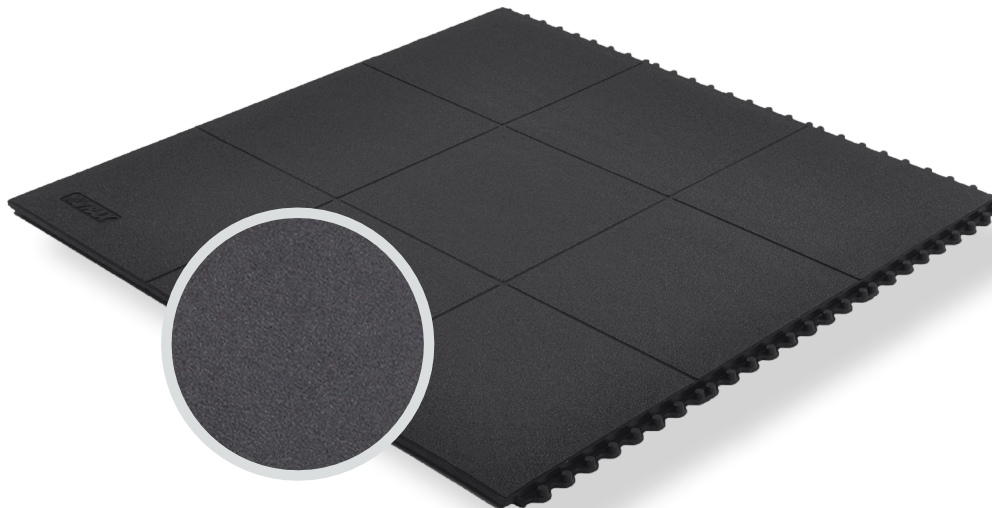
PRODUCT INFORMATION BROCHURE





For over 70 years, the name Notrax[®] has meant superior quality, service, and innovative products. Now this brand is a cornerstone of Justrite Safety Group, offering the widest selection of products to a variety of markets and applications including entrance mats, anti-fatigue/safety mats, and products designed specifically for use in professional food service environments. Notrax[®] offers a complete selection of floor matting options to meet any application requirement, quality expectation, and budget.

- **Track record of manufacturing high quality mats for over seventy years**
- **All products are manufactured in ISO certified facilities**
- **Notrax[®] offers anti-fatigue matting, entrance matting, safety matting, food service matting and specialty mats designed for a variety of industries**



558 - CUSHION-EASE® ESD SOLID is an Electro Static Discharge (ESD) protective mat that is formulated to drain static electricity from workers to safeguard against static shocks and protect equipment. Cushion-Ease® ESD Solid modular anti-fatigue matting system is made with a resilient rubber compound with a solid top anti-slip surface texture and a multi-nib backing for comfort and ergonomic support of the mat. The solid-top design of Cushion-Ease® ESD Solid has an anti-slip surface texture for added traction and is easy to clean. All Cushion-Ease® mats have a male/female interlocking system and are compatible with Notrax® M.D. Ramp System® for easy on-site custom configurations and trip-resistant platforms.

Material: Natural Rubber

Features and Benefits:


- ESD Static Dissipative
- Resilient rubber compound and unique support design offers exceptional fatigue relief
- Solid top design with an anti-slip surface texture is easy to clean
- Easy to snap together mat on-site for custom work stations
- Rubber compound is grease resistant
- (ESD) Conductive - measured resistance Rg 106 - 109 Ω/Rp 106 - 109 Ω
- Compatible with any Cushion-Ease® family mats
- 551 M.D. Ramp System® and 552 extra wide M.D.-X Ramp System™ available
- Grounding cord available, not required

⚠ WARNING: This product can expose you to chemicals including diisodecyl phthalate which is known to the State of California to cause birth defects or reproductive harm, and 2-mercaptobenzothiazole which is known to the State of California to cause cancer. For more information, visit www.P65Warnings.ca.gov



MODEL: 558

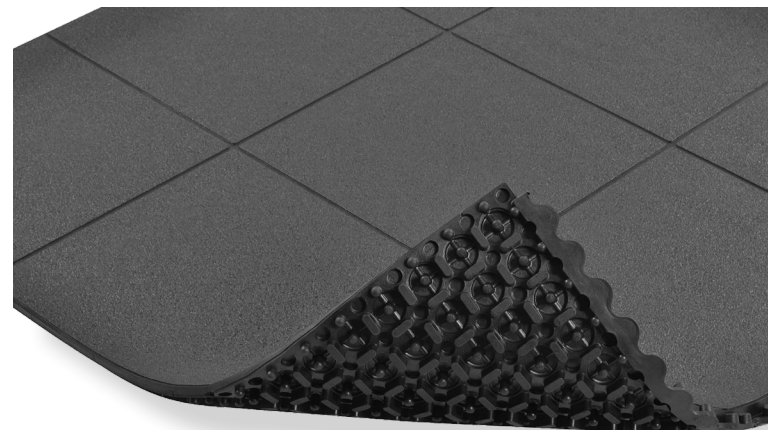
SPECIFICATIONS

Stock Sizes	3'x3'
Thickness	3/4"
Colors	 Black

Performance:	Good	Better	Best	Superior
Wear Resistance	██████████			██████
Anti-fatigue Performance	██████████			██████
Slip Resistance	██████████			██████

APPLICATIONS

- Workstations
- Packaging Areas
- Assembly Lines
- Welding Areas





NOTRAX®

5655 West 73rd Street
Chicago, IL 60638

PHONE: (800) 621-2802

FAX: (800) 322-7105

EMAIL: saleschicago@checkers-safety.com

www.notrax.com

A PRODUCT OF:



Justrite Safety Group is the leading source of safety equipment for flammables and hazardous materials storage and handling, asset protection, environmental protection spill containment, absorbents, specialized chemical storage, cable management, safety showers and eye/face washes, matting, and vehicle safety equipment. Learn more at Justrite.com, Checkers-safety.com, and Notrax.com.