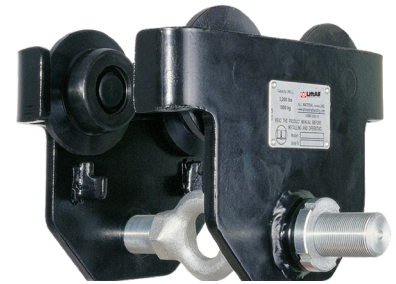
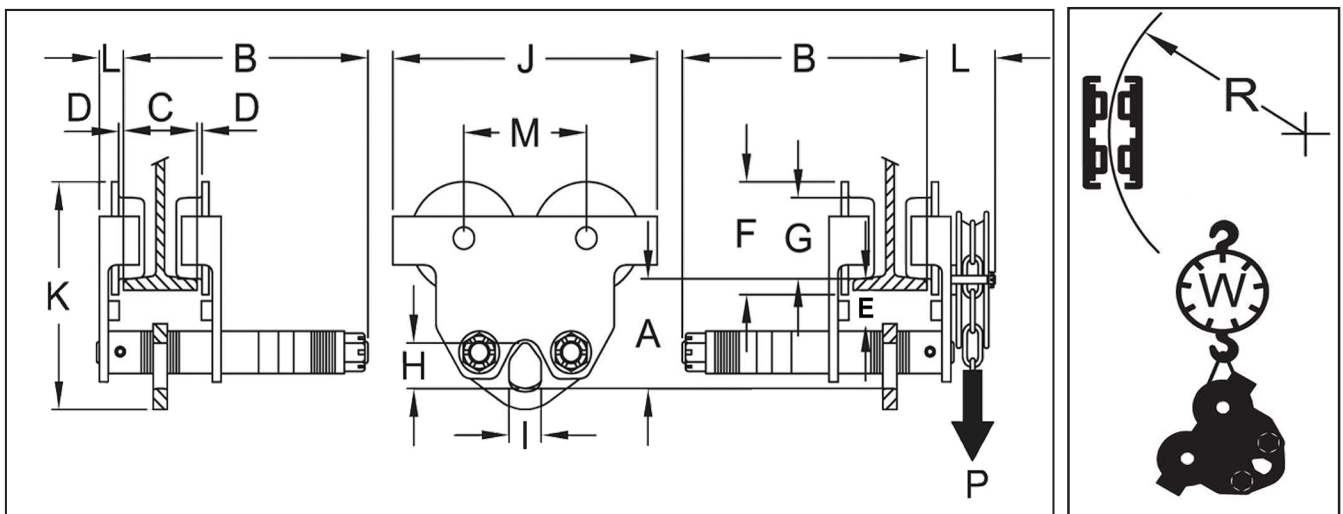


PUSH TROLLEY

- 1/2t to 5t installation and adjustment by rotating the threaded hanger shaft.
- 10t to 30t is from one side, trolley hanger shafts are mounted to the opposite side plate.
- Trolleys up to 5t have a 5:1 design factor and can be used for manual or powered hoists.
- The 10t has a 4:1 design factor and must be derated for powered hoist.
- Machined cast iron wheels with universal tread design to fit flat on tapered beam flanges.
- Low headroom design with precision sealed "lubed for life" bearings assure smooth operation.
- Durable all steel construction with standard safety lugs.
- Geared trolley hand chain drop is standard with a 20' drop.
- Meets ASME/ANSI B30.16, OSHA, NASA-STD-8719.9, EU Directives: 2006/42/EC.
- ATEX rated Ex II 3 GD c IIB 54° C X for limited use in Hazardous Environments.



Model	WLL (Metric Tons)	A	B	C Standard (in.)	Dimensions (in.)											R MIN (in.)	Weight (lbs.)
					D	E	F	G	H	I	J	K	L	M	P		
PT005	1/2	3.3	11.5	1.97 - 8.66	0 - 0.12	1.5	2.3	3.4	1.2	0.9	8.9	6.8	—	4	—	36	18
PT010	1	3.7	11.8	2.28 - 8.66	0 - 0.12	1.7	2.4	3.7	1.4	0.9	9.9	7.4	—	4.7	—	40	24
PT020	2	4.4	12.2	2.60 - 8.66	0 - 0.12	1.6	3.2	4.6	1.9	1.0	11.8	8.9	—	5.5	—	48	40
PT030	3	5.8	12.8	2.91 - 8.66	0 - 0.12	2.5	3.9	5.5	2.3	1.3	14.2	11.4	—	6.3	—	52	69
PT050	5	6.3	13.0	3.54 - 8.66	0 - 0.12	2.2	4.3	5.9	2.8	1.5	15.4	12.3	—	6.7	—	56	94
PT100	10	7.5	15.5	4.9 - 12.01	0.08 - 0.13	1.8	7.0	5.4	4.4	2.8	18.1	15.5	1.8	7.9	—	79	198



General Information
Web Slings
Round Slings
Slings Protection
Wire Rope
Chain Slings
Rigging Hardware
Mesh Slings
Load Huggers
Tow Products
Lift-All Hoists
Hoist Rings
Plate Clamps
Lifting Devices