



Stainless Steel Air & Vacuum Relief Tank Vent Valve



This valve has been designed as a secondary safety pressure and vacuum relief vent. Always open upper manhole whenever product is being transferred in excess of 250 GPM.

Receiving & Unpacking Instructions

1. Carefully unpack and inspect for any damage in shipping.
2. Inspect the exterior to ensure the screen is not dented.
3. Push up on the pressure plate from under the valve and inspect to ensure the O-rings are not dislodged.



All tolerances have been designed to be extremely close to hold a positive head pressure. Be careful when cleaning and assembling not to damage any of the components or O-ring sealing surfaces. If any of these items become damaged the vent may not work properly.

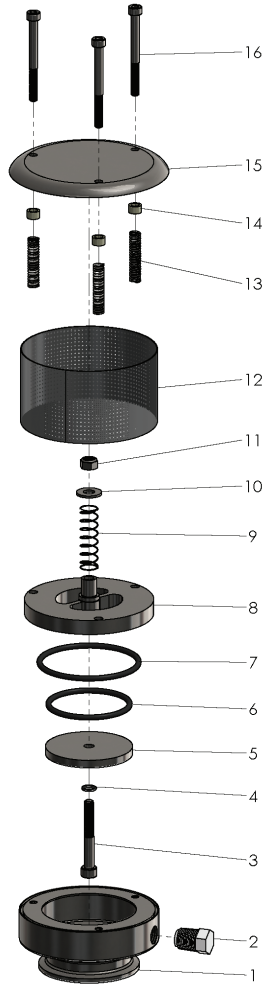
Cleaning Instructions

1. Valve must be cleaned whenever over filling of the tank has occurred.
2. Completely disassemble valve and wash all parts separately. Be careful not to damage any components.
3. Remove all O-rings. Clean inside O-ring grooves. Inspect all O-rings and replace if needed.
4. Clean the inside of the sleeve where the vacuum bolt (3) slides. The vacuum bolt must slide freely to operate properly.
5. All O-ring sealing surfaces must be clean and DRY.

Assembly Procedure

1. Install vacuum O-ring (6) onto pressure plate (8), (inspect O-ring and be certain O-ring is not twisted, this can cause vacuum disk to not seal properly). Be careful not to roll or stretch O-ring when pressing into groove. Press straight down only. Inspect O-ring to ensure it is lying flat.
2. Install pressure O-ring (7) onto pressure plate (8). Inspect O-ring and be certain O-ring is not twisted, this can cause vacuum disk to not seal properly. Be careful not to roll or stretch O-ring when pressing into groove. Press straight down only. Inspect O-ring to ensure it is lying flat.
3. Slide small O-ring (4) onto vacuum bolt (3); insert vacuum bolt through the vacuum disk (5) with the head of the bolt opposite the flat side of the vacuum disc. Press the small O-ring (4) up into the counter bore in the vacuum disk (5).
4. Insert vacuum bolt (3) through center of pressure plate (8).
5. Slide vacuum spring (9) over vacuum bolt (3) and pressure plate (8). While holding down vacuum spring (9), assemble flat washer (10) and lock nut (11). **ONLY TIGHTEN NUT FAR ENOUGH TO SEE BOLT EVEN WITH THE TOP OF THE NUT.**
6. Set main body (1) on a flat surface with clamp connection down.
7. Position large pressure plate (8), with vacuum disc down, over main body (1). Line up holes in pressure plate (8) with screw holes in body.
8. Insert the three cover screws (16) through the holes in the cover (15). Turn the cover sideways. While holding the screws (16) from falling out with the palm of your hand, slide the three spacers (14) and the three pressure plate springs (13) onto the three screws (16).
9. Holding the springs (13) from falling off, guide the three screws through the pressure plate (8).
10. Thread the three screws (16), one turn only, into the main body (1).
11. Spread the screen (12) open just enough to slide it over the cover (15) and around the three springs (13).
12. Start one side of the air screen (12) into the small groove located in the top of the body (1). While holding the cover (15) down with one hand, work the screen (12) in around the body (1) until entire screen (12) is seated into the groove.
13. While continuing to hold down the cover (15), use a 4mm Allen Wrench to tighten the three cover screws (16). Do not over tighten the screws (16).

Bill of Materials



Item	Description	Material	Quantity Required
1	body	304 stainless	1
2	plug	PVC	1
3	vacuum bolt	304 stainless	1
4	O-ring (vacuum bolt)	EPDM	1
5	vacuum disc	304 stainless	1
6	O-ring (vacuum disc)	EPDM	1
7	O-ring (pressure plate)	EPDM	1
8	pressure plate	304 stainless	1
9	vacuum spring	304 stainless	1
10	flat washer	304 stainless	1
11	nut	304 stainless	1
12	screen	304 stainless	1
13	pressure plate springs	304 stainless	3
14	spacers	304 stainless	3
15	cover	304 stainless	1
16	cover screws	304 stainless	3

Repair Kit: includes items # 4, 6 and 7

connect with us on



Dixon Sanitary

N25 W23040 Paul Road • Pewaukee, WI 53072

ph: 800.789.1718 • 262.513.6900 • fx: 800.789.4046 • 262.513.4904

dixonvalve.com

scan to visit our website

