

58B Series

Balancing Valve

SUBMITTAL SHEET

"Apollo" Flow Controls



Job Name:	
Job Location:	
Engineer:	
Contractor:	
Tag:	
PO#:	
Rep:	
Wholesale Dist.:	

DESCRIPTION

Apollo® Model 58B Commercial Double Regulating Valve are intended for the isolation and regulation of sections of pipe work and equipment in HVAC applications and general commercial applications. Valve pressure drop can be read through the valves integrated 1/4" measurement ports, and flow calculated from the flow coefficient associated with the numerical setting on the side of the handle. The valves have non-rising stems that help reduce the amount of space needed. The integrated fixed orifice offers greater accuracy than that of a variable orifice.

FEATURES

- Regulating and Isolating Functions
- Flanged End Connection Compatible with ANSI 125# & 150# Flanges
- Rugged Handwheel
- Grooved End Adapters Available

PERFORMANCE RATING

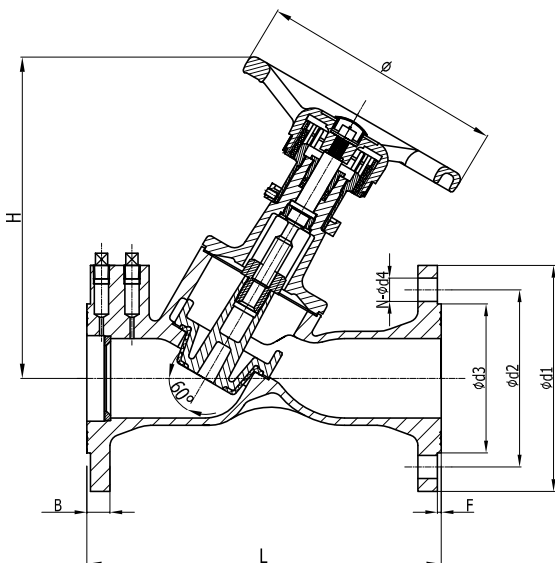
- Max Working Pressure: 300 PSI
- Temperature Range: 15°F - 250°F (non shock)

STANDARD MATERIALS LIST

Body	Ductile Iron
Bonnet	Ductile Iron
Disc	Ductile Iron, EPDM Coated
Disc Nail	Brass
"O" Ring	EPDM
Stem	Stainless Steel
Gasket	Graphite
Handwheel (2-1/2" - 4")	Carbon Steel
Handwheel (5" - 12")	Ductile Iron

DIMENSIONS

PART NUMBER (FLANGED)	SIZE	DIMENSIONS (IN)									WEIGHT (LB)		FLOW RATES	
		L	H	B	Ø	ØD1	ØD2	ØD3	F	N- ØD4	FLANGED	GROOVED	C _v	C _{vs}
58B209F	2-1/2"	11.42	10.43	0.69	7.87	7.01	5.5	4.12	0.08	4-Ø 3/4"	38.94	23.11	120.23	120.23
58B200F	3"	12.2	10.63	0.75	7.87	7.52	6	5	0.08	4-Ø 3/4"	51.92	33.90	129.48	134.11
58B20AF	4"	13.78	12.2	0.94	9.45	9.02	7.5	6.19	0.08	8-Ø 3/4"	66	44.78	187.29	246.25
58B20BF	5"	15.75	13.39	0.94	11.42	10	8.5	7.31	0.08	8-Ø 7/8"	99	77.06	293.65	384.98
58B20CF	6"	18.9	13.39	1	11.42	10.98	9.5	8.5	0.08	8-Ø 7/8"	114.4	91.49	387.29	550.3
58B20EF	8"	23.62	21.14	1.13	13.78	13.5	11.75	10.62	0.08	8-Ø 7/8"	231	187.85	618.51	887.88
58B20GF	10"	28.74	22.44	1.19	16.54	15.98	14.25	12.75	0.08	12-Ø 1"	407	323.70	1270.55	1332.98
58B20HF	12"	33.46	27.17	1.25	16.54	19.02	17	15	0.08	12-Ø 1"	545.6	445.07	1835.89	2015.08



Customer Service (704) 841-6000
www.apolloflowcontrols.com

This specification is provided for reference only. Conbraco Industries Inc. reserves the right to change any portion of this specification without notice and without incurring obligation to make such changes to Conbraco products previously or subsequently sold. Please visit apolloflowcontrols.com for the most current information.

